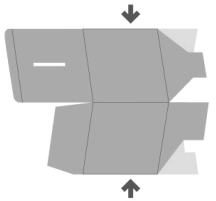
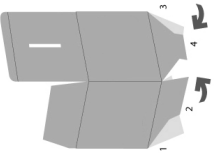


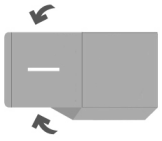
First, put your bank in this starting position.



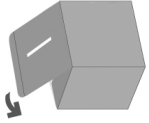
Gently press on both edges toward the center to form the cube.



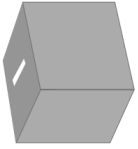
Fold each flap upward like shown.



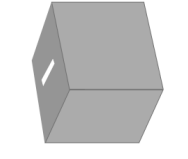
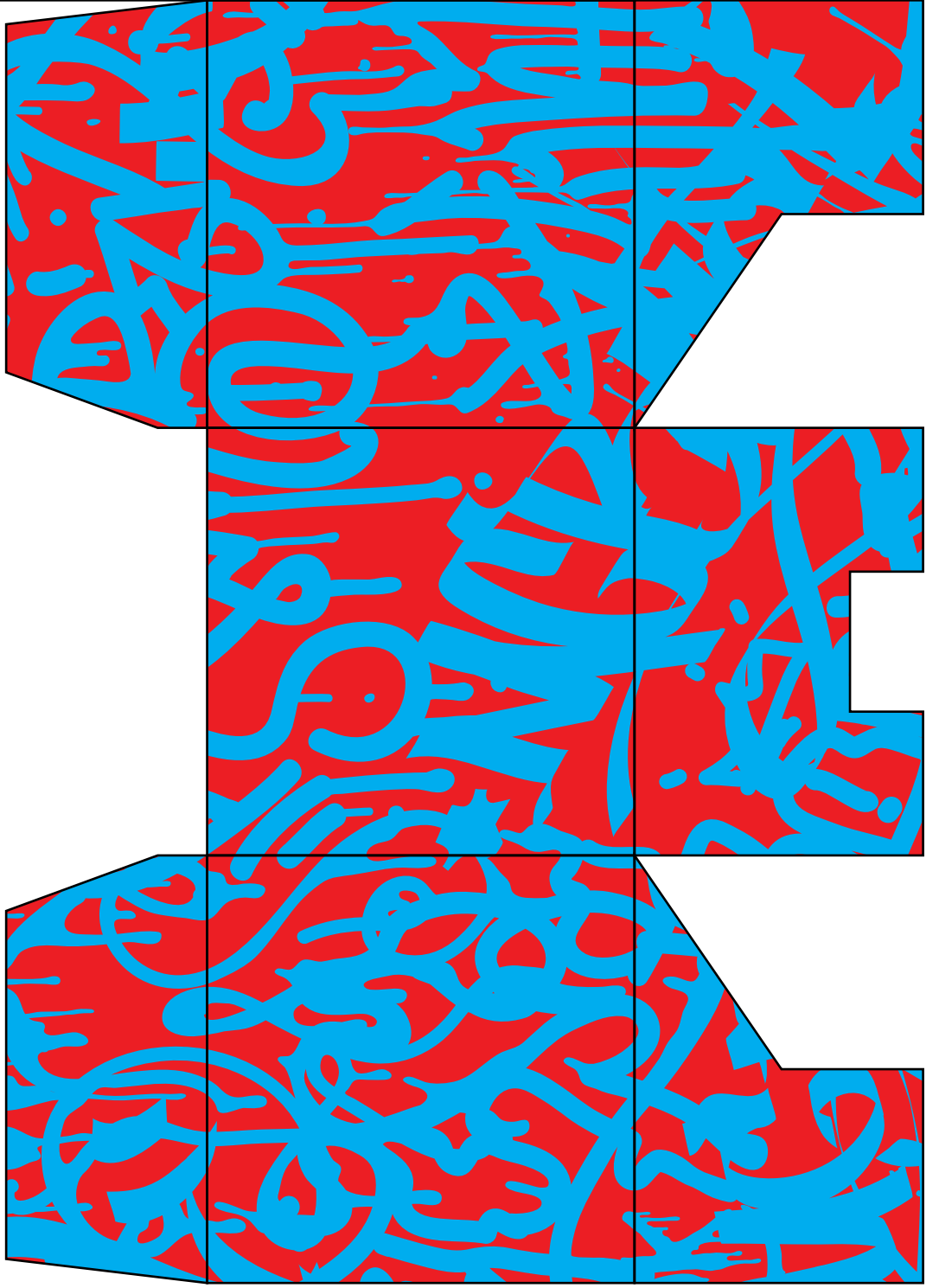
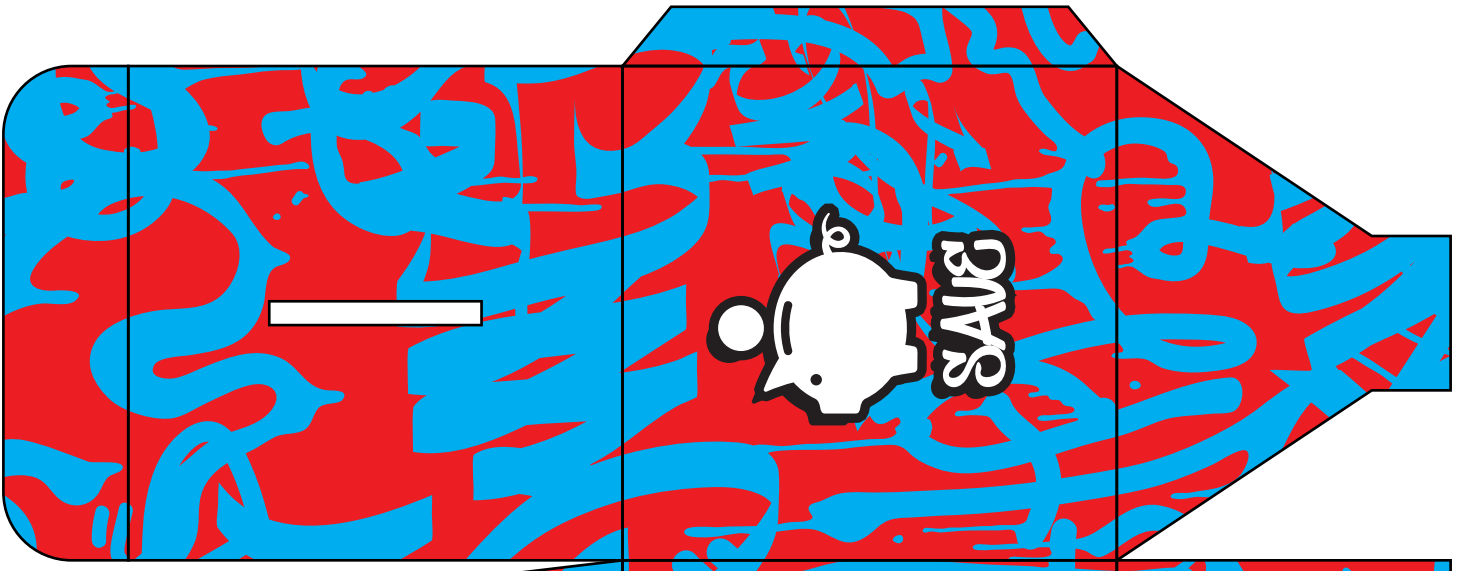
Fold the side flaps toward the center.



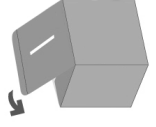
Close the cap backwards like a box.



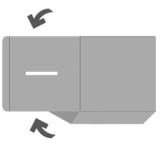
It's ready!



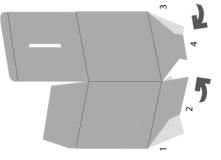
It's ready!



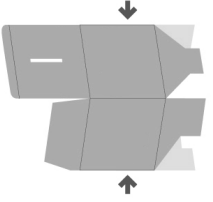
Close the cap backwards like a box.



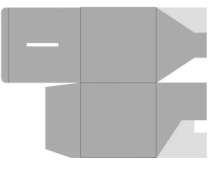
Fold the side flaps toward the center.



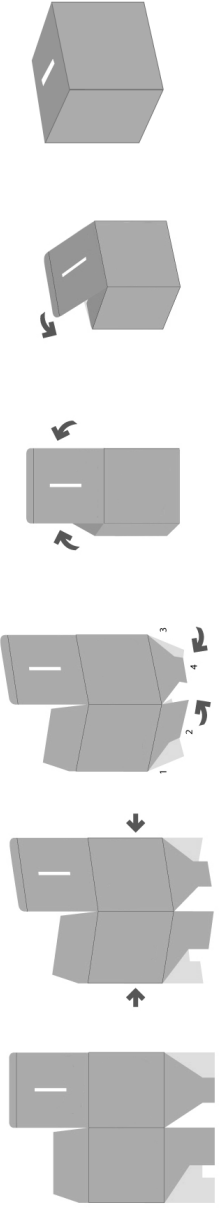
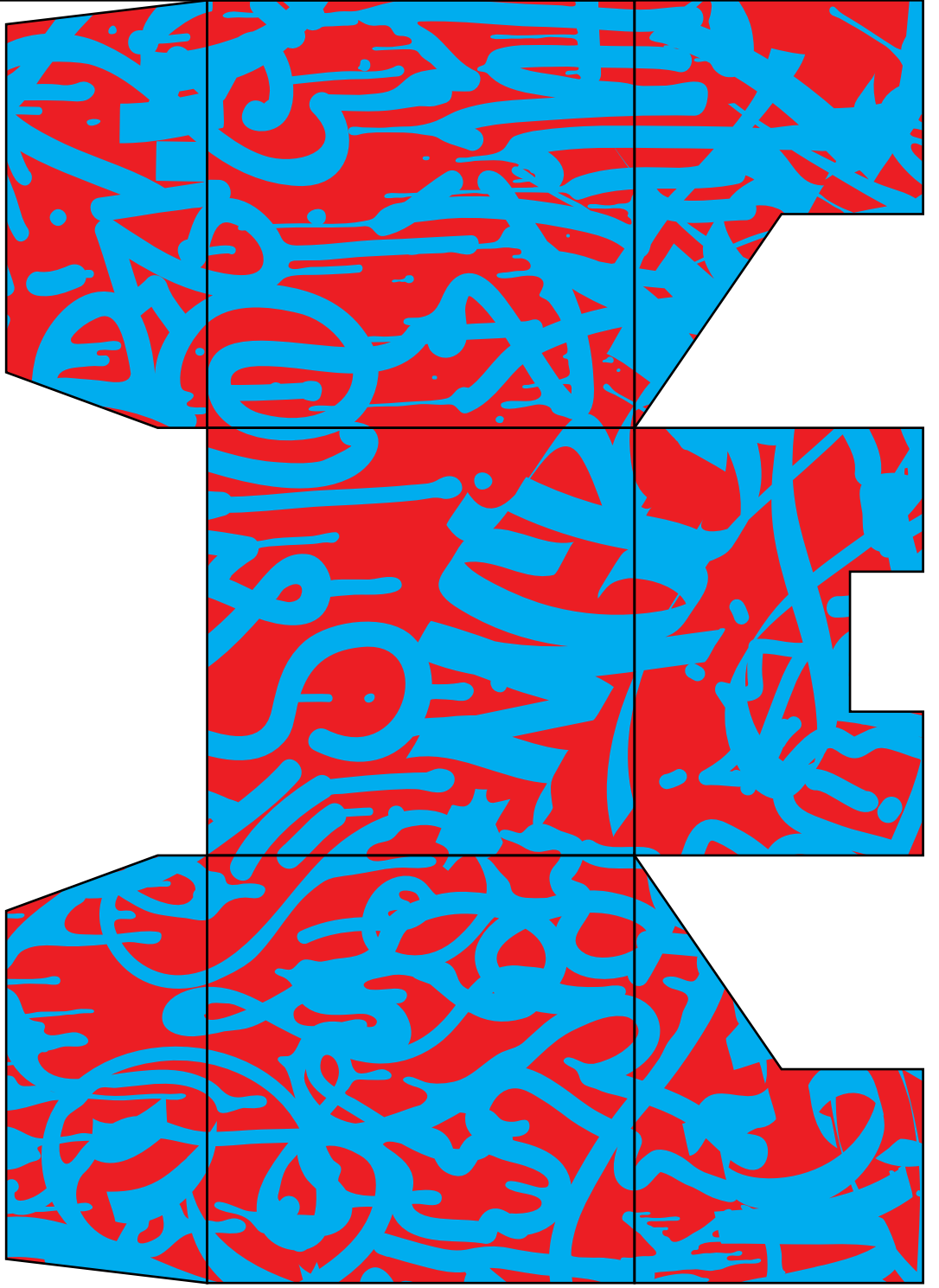
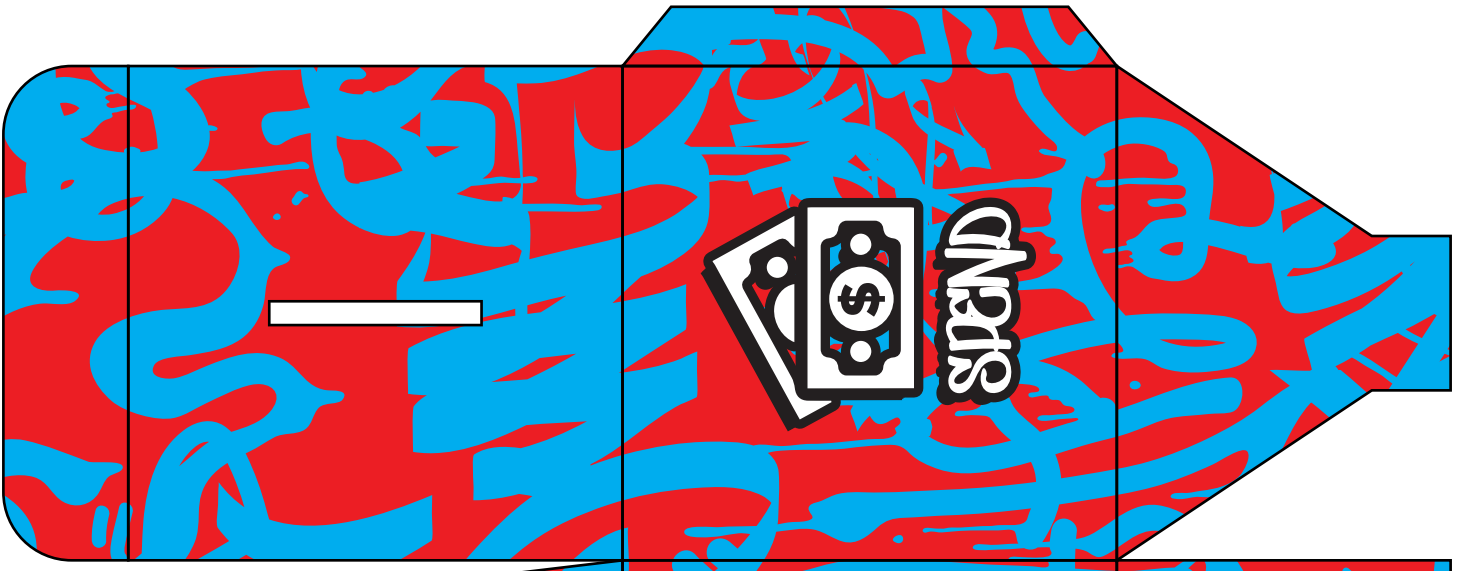
Fold each flap upward like shown.



Gently press on both edges toward the center to form the cube.



First, put your bank in this starting position.



First, put your bank in this starting position.

Gently press on both edges toward the center to form the cube.

Fold each flap upward like shown.

Fold the side flaps toward the center.

Close the cap backwards like a box.

It's ready!

