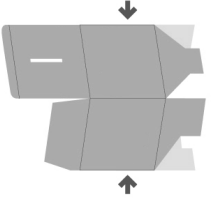
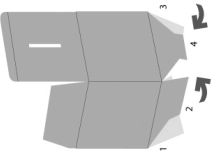


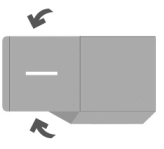
First, put your bank in this starting position.



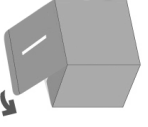
Gently press on both edges toward the center to form the cube.



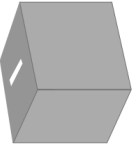
Fold each flap upward like shown.



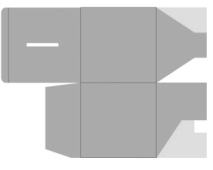
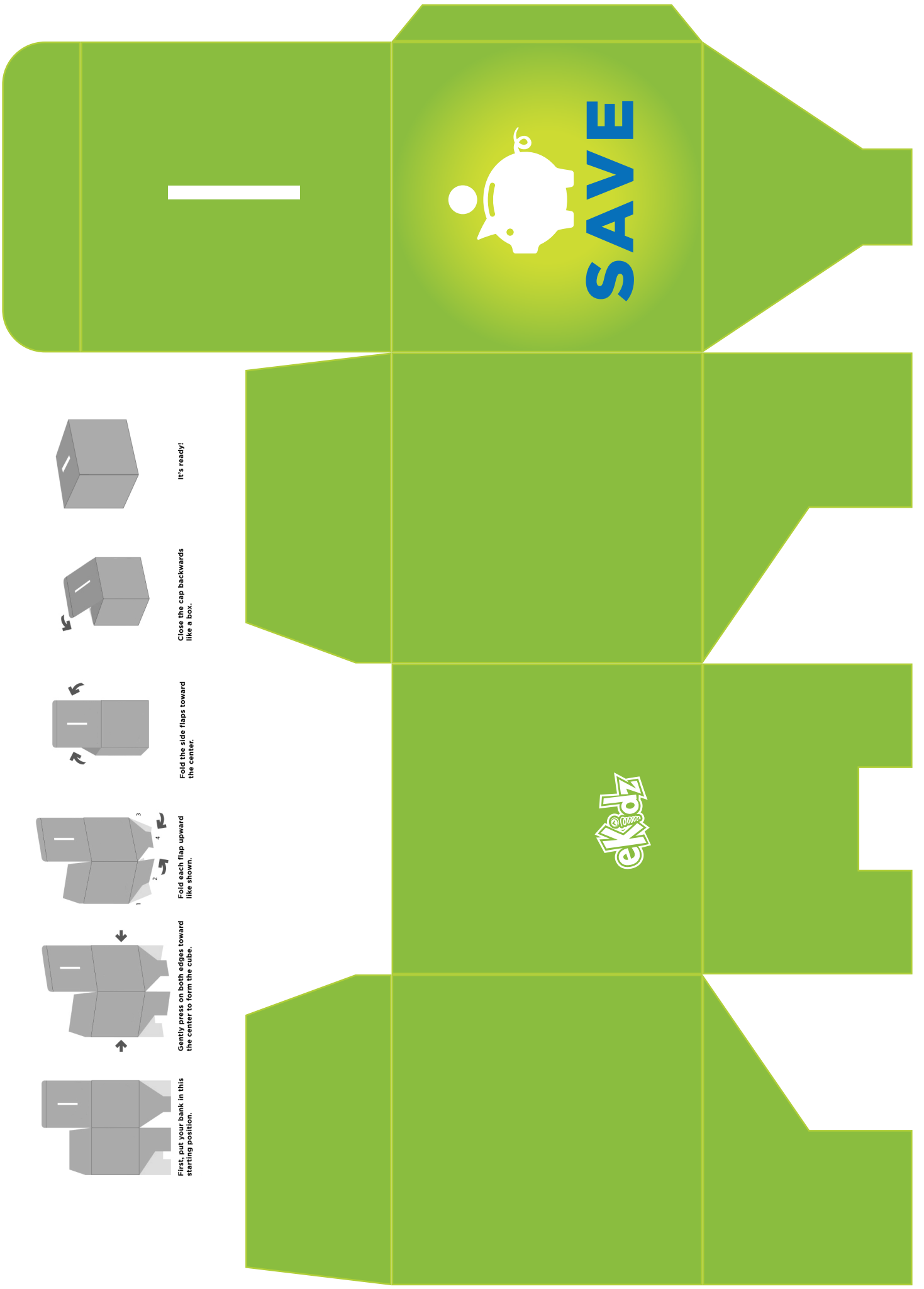
Fold the side flaps toward the center.



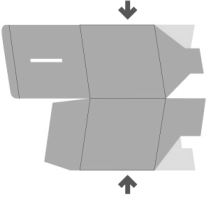
Close the cap backwards like a box.



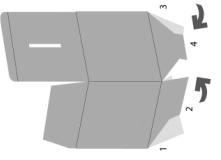
It's ready!



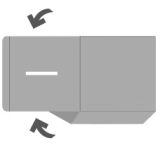
First, put your bank in this starting position.



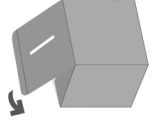
Gently press on both edges toward the center to form the cube.



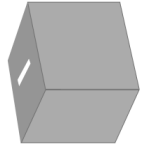
Fold each flap upward like shown.



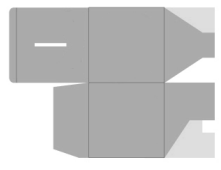
Fold the side flaps toward the center.



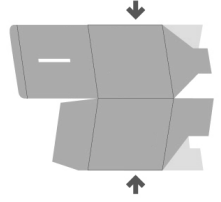
Close the cap backwards like a box.



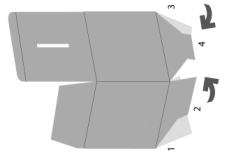
It's ready!



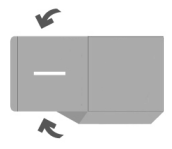
First, put your bank in this starting position.



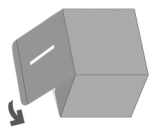
Gently press on both edges toward the center to form the cube.



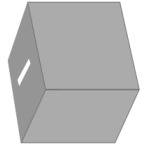
Fold each flap upward like shown.



Fold the side flaps toward the center.



Close the cap backwards like a box.



It's ready!

