



**Give.
Save.
Spend.**

God has given us everything we have, and because of His generosity, we get to give back to Him!

This “Give.Save.Spend. Kit” helps teach kids the principles of godly stewardship, such as how to use their time, talents, and money wisely by giving God their first and best.

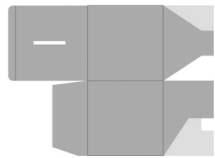
To assemble the kits, start by helping your child use the materials to build three boxes (GIVE, SAVE, and SPEND). As they make the boxes, talk to your child about what each box represents and what the Bible says about money. Scan the QR code below for a Give.Save.Spend. devotional to continue the conversation.

Share the 80/20 principle — GIVE the first 10% of your money to God, SAVE 10% for the future, and SPEND 80% of what’s left in a God-honoring way. Malachi 3:8-10 tells us to bring our whole “tithe” (a tenth of what we make) to God’s “storehouse” (the church), and when we do this, God promises to bless our obedience.

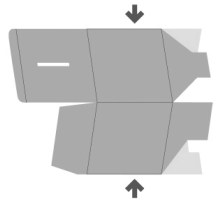
To help your child manage money, consider using the household chore chart in the kit so they can earn an allowance, or encourage them to think of other ways to earn money (such as raking leaves for a neighbor or a lemonade stand).

Use these opportunities to teach your child how to manage their money and give God’s way.

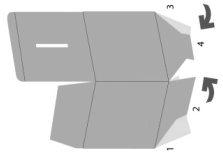




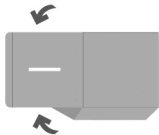
First, put your bank in this starting position.



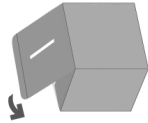
Gently press on both edges toward the center to form the cube.



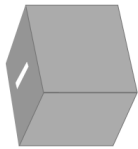
Fold each flap upward like shown.



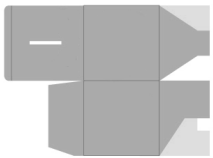
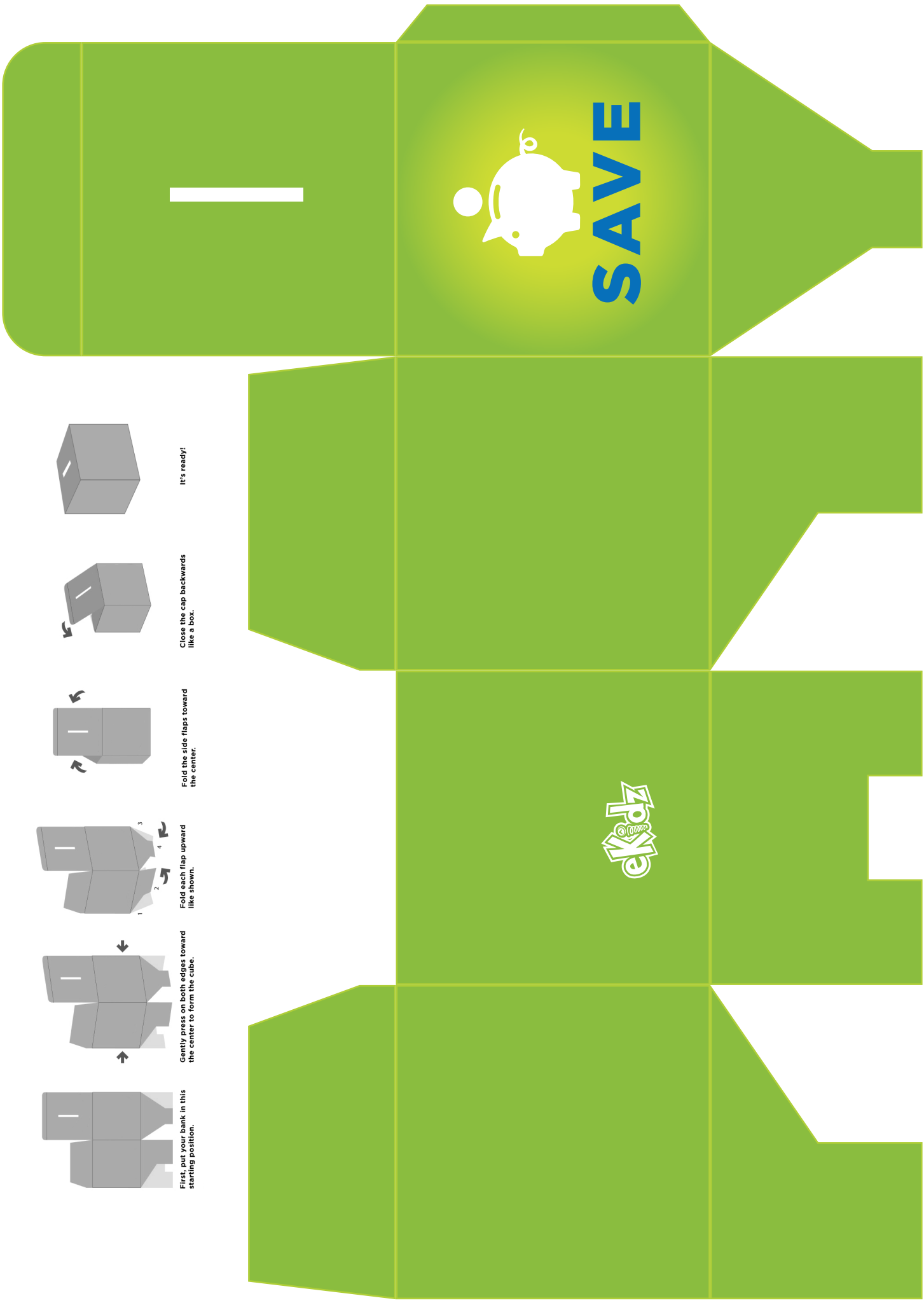
Fold the side flaps toward the center.



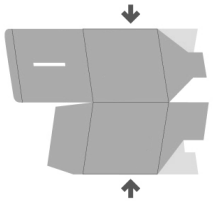
Close the cap backwards like a box.



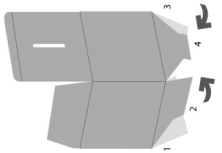
It's ready!



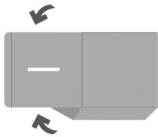
First, put your bank in this starting position.



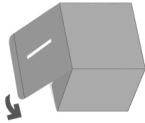
Gently press on both edges toward the center to form the cube.



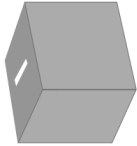
Fold each flap upward like shown.



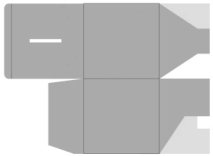
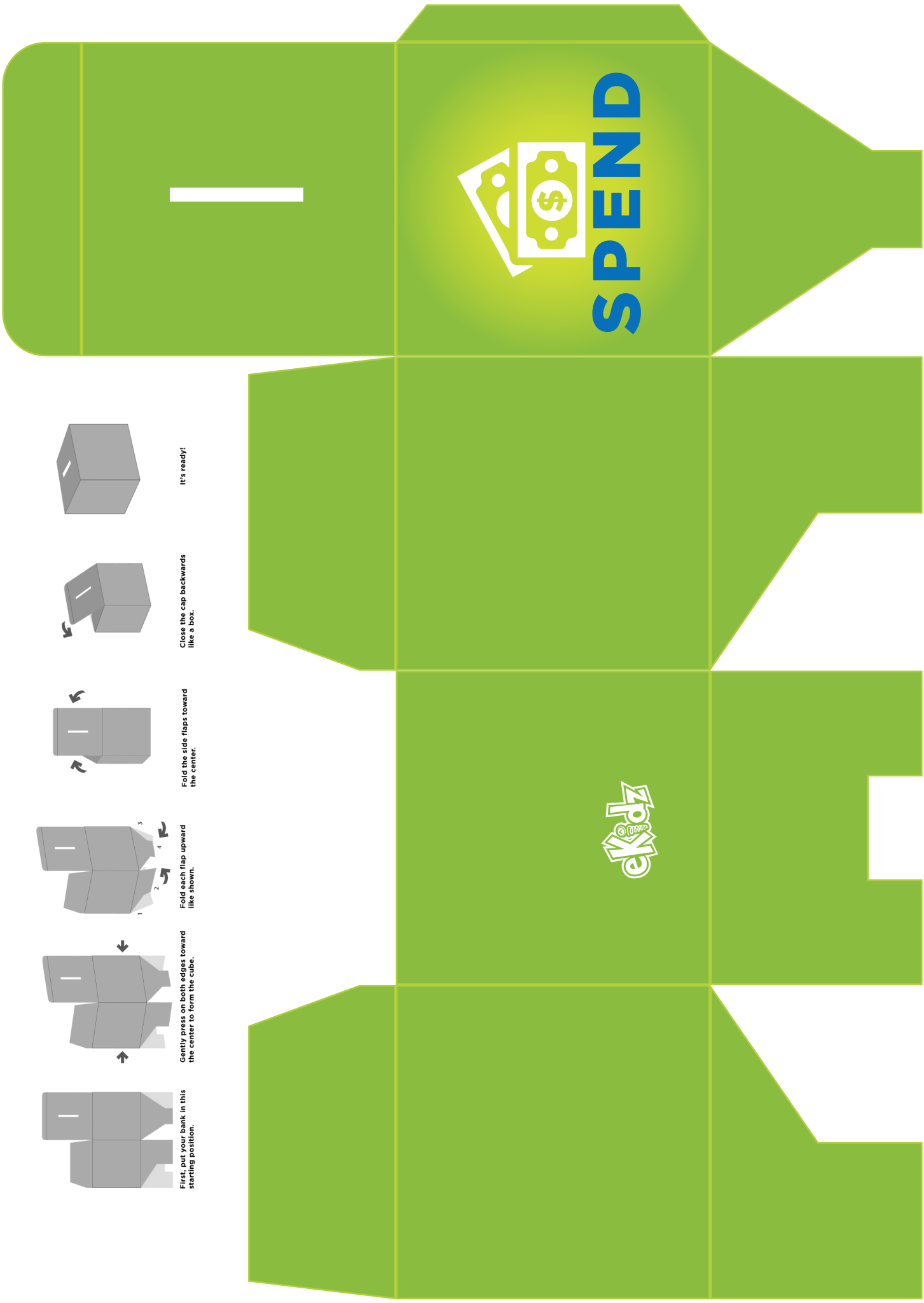
Fold the side flaps toward the center.



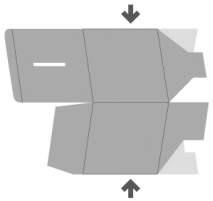
Close the cap backwards like a box.



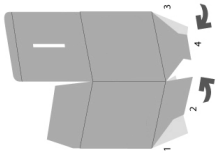
It's ready!



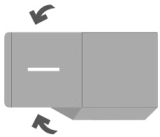
First, put your bank in this starting position.



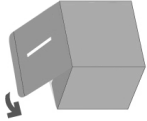
Gently press on both edges toward the center to form the cube.



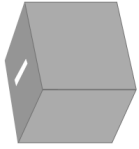
Fold each flap upward like shown.



Fold the side flaps toward the center.



Close the cap backwards like a box.



It's ready!



CHORE CHART

NAME _____

WEEK OF _____

AMOUNT EARNED _____

MON TUE WED THU FRI SAT SUN

UNLOAD
DISHWASHER

CLEAR TABLE

VACUUM

_____	_____	_____	_____	_____	_____	_____
_____	_____	_____	_____	_____	_____	_____
_____	_____	_____	_____	_____	_____	_____
_____	_____	_____	_____	_____	_____	_____
_____	_____	_____	_____	_____	_____	_____
_____	_____	_____	_____	_____	_____	_____
_____	_____	_____	_____	_____	_____	_____

